

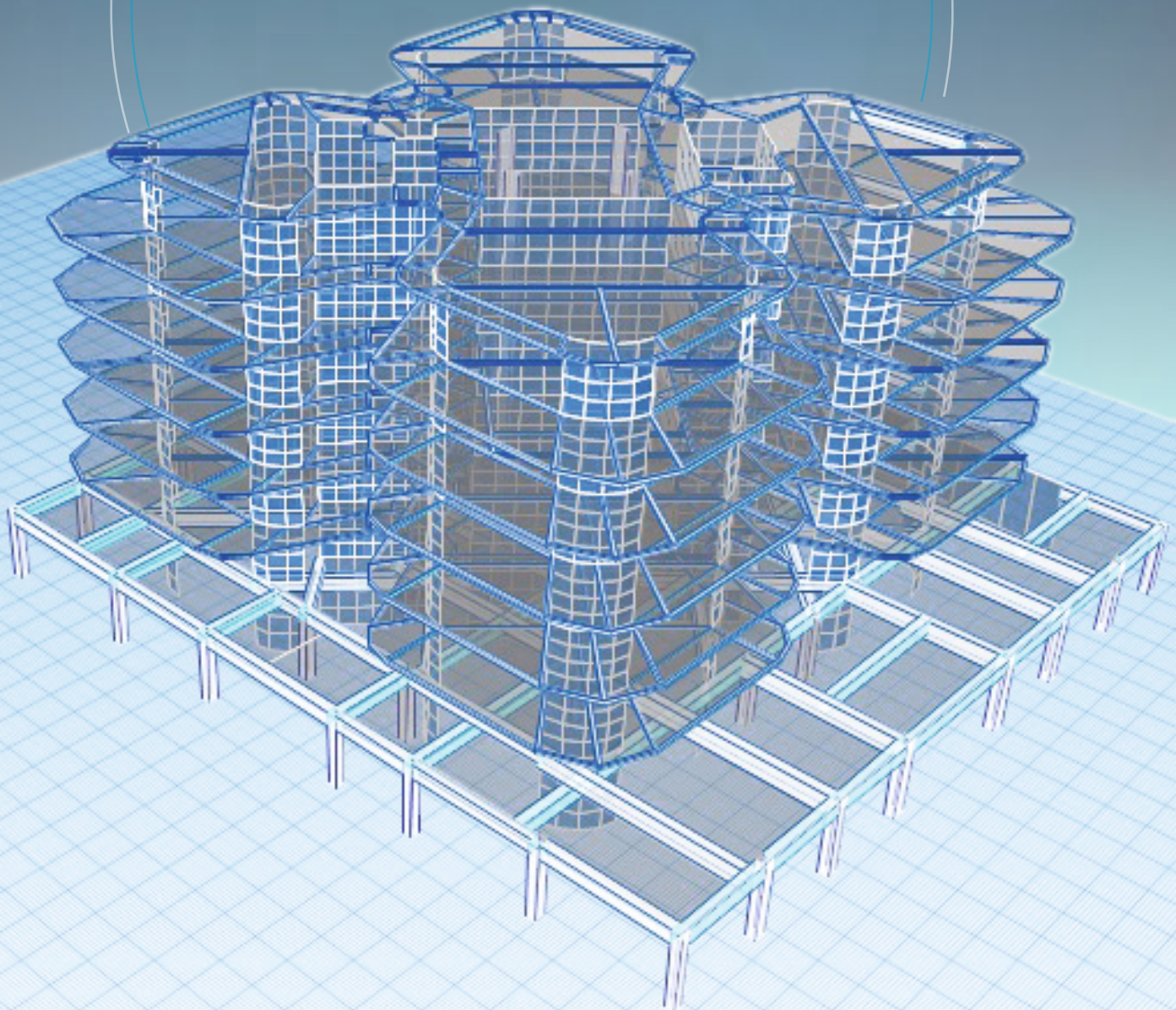
[www.acecon.in](http://www.acecon.in)



We shape your ideas

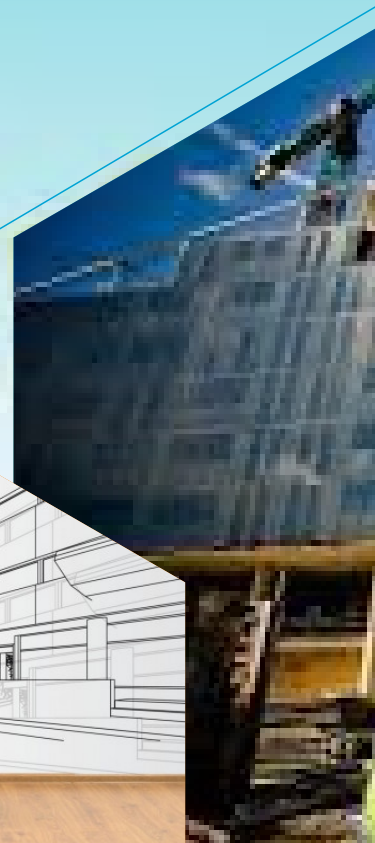
# ACECON ENGINEERS

Structural Engineering Consultants





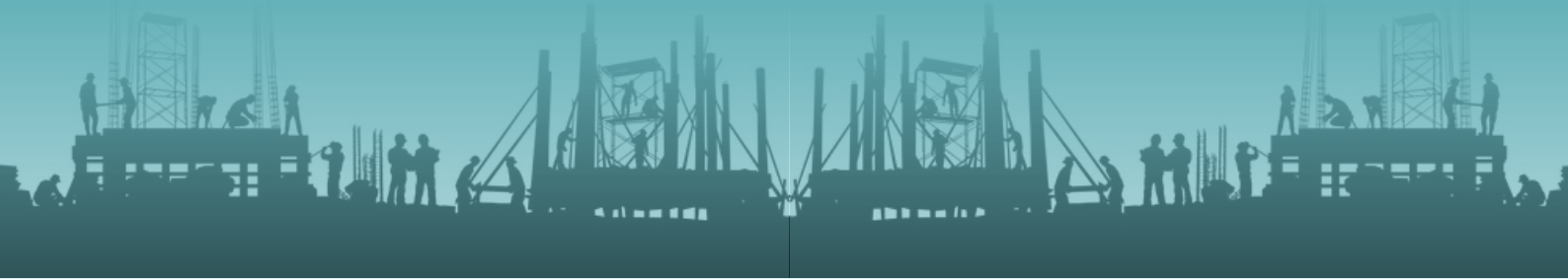
- ⑩ About Founder
- ⑩ The Link
- ⑩ Who we are
- ⑩ About us
- ⑩ Engineering Associates and Membership
- ⑩ Mission, Vision & Principles
- ⑩ Our Q.H.S.E. Policies
- ⑩ Company Objectives
- ⑩ Our Leaders
- ⑩ Our Services
- ⑩ Our Projects





*Syed Mohammad Adnan*

**M. Tech. (Structures)  
Chartered Engineer**



ACECON ENGINEERS, a Structural Engineering firm was founded by 'Syed Mohammad Adnan' in early 2008 in New Delhi. Trained in Structural Engineering under some very well-known Structural Engineering Consultants of the time after receiving Bachelor of Technology in Civil Engineering from Aligarh Muslim University (AMU) in 2002 and later did masters of Technology in Structural Engineering from MBU, HP, Adnan is an 'Associate Member' in 'Institution of Engineers (India) and a 'Chartered Engineer'

During the extensive tenure of more than 15 years Acecon has delivered more than 600 projects from villas to multistory tall buildings, residential to commercial buildings, hospitals, educational buildings, airport, railway stations, industrial structures and so on. Have worked on projects from Dahej (Gujrat) to Imphal (Manipur) and from Srinagar to Kochi covering almost every state. Acecon has worked and delivered projects across many countries like Bangladesh, Pakistan, Nepal, Afghanistan, UAE, Saudi Arabia, Oman, Sierra Leone etc.

Some of the known projects under Acecon banner are 'National Cancer Institute-AIIMS' at Jhajjar, Haryana, Varanasi Airport (International Terminal) along with 45M single span Space frame structure, Structural Stability Audit of Headquarter building of 'Press Trust of India at Sansad Marg, New Delhi, Petronet LNG office building on 50M Deep Piles at Sea bed in Kochi, Structural Restoration of World Bank building at Lodhi Road, New Delhi, Jabalpur Railway Station building and many multistory buildings.

Acecon another forte is the Structural Stability Assessment of the existing buildings especially in Seismic Hazard regions. We have worked and developed the Assessment programs for international brands in India, Bangladesh & Pakistan for two of Big Four firms like KPMG & PWC. In these programs we have covered more than 120 factory sites across the subcontinent.



## THE LINK BETWEEN Creativity & Innovation

It's the human effort to imitate, supplement, and counteract the work of nature. More than just methods and principles of physics, it includes intuitive knowledge that cannot be learned solely by study. It's applied art. The art of Structural Engineering moves beyond simply framing a structure or laying out a site. It integrates engineering concepts with architectural visions to produce projects that are seamless.

These are the reasons that make ACECON ENGINEERS synonyms of solidity and credibility.





# We<sup>ho</sup> are



Since establishment in 2008, we have worked to develop and fine-tune a highly automated but creatively charged environment that allows us to continually improve our design processes while providing exceptional results.

ACECON is a Structural and Civil Engineering consulting firm providing services to Architects, Engineers, Contractors, Developers, Governmental entities, Industries and Institutions.

ACECON Confidently can tackle any project that needs a unique engineering approach for all kind of building such as but not limited to Airports, Railway stations, Hospitals, Hotels, Residential Towers, Malls, Villas, Educational & Industrial Projects as well as Religious Structures.

Apart from expertise in the usual engineering work, such as feasibility studies and design, we also offer a practical, "hands on" engineering approach to projects. In short, we deliver a one stop, complete package from project inception through to a comprehensive operations and maintenance service.



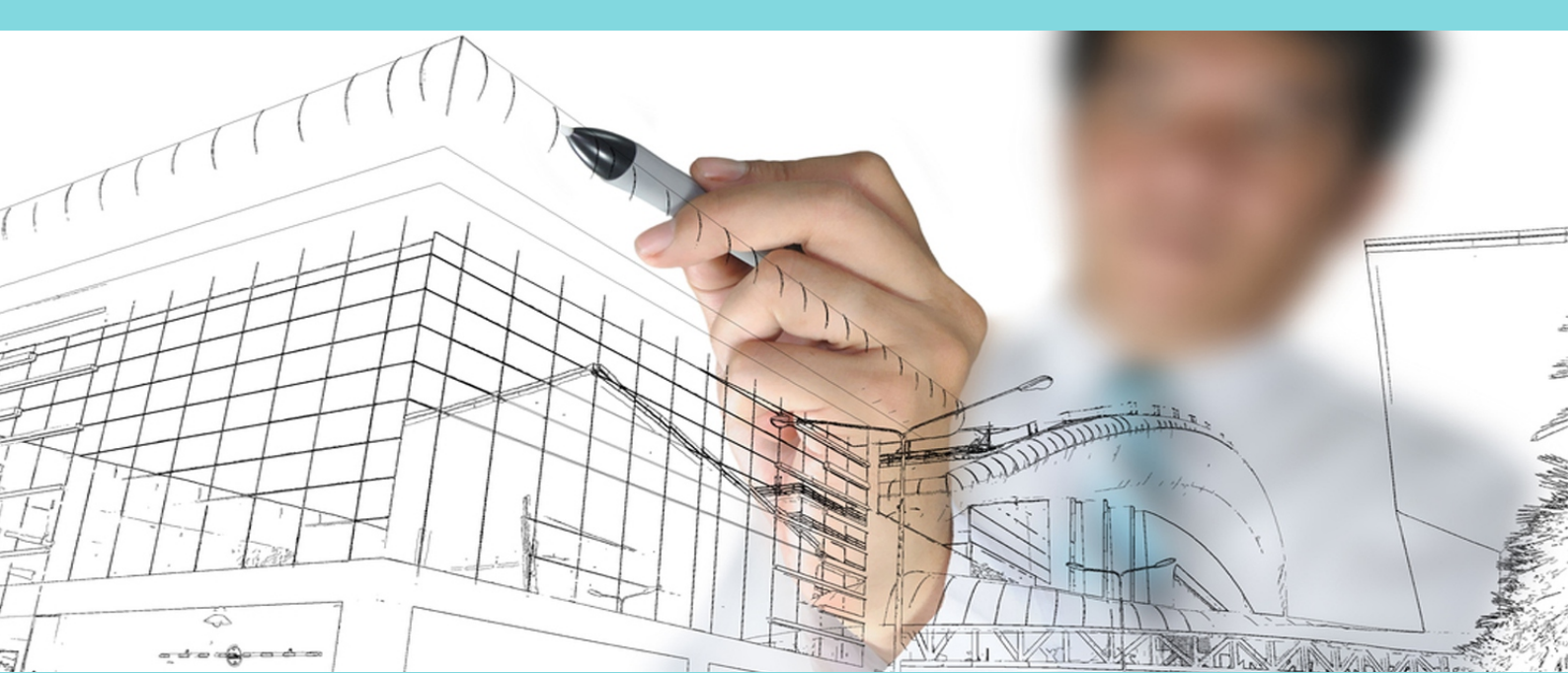
We are one of the leading specialized engineering consultant in India, with more than 15years of experience in Consultancy Engineering.

By tailoring services to fit our Clients' needs, and the goals they wish to achieve, we provide ideas that are both successful and sustainable. We are innovative and push our selves to find the exact engineering satisfaction to our client or architect.

ACECON offers the special ability to provide professional services with these attributes affordably and in a fraction of the time required by others.

We hope you'll take a moment to learn more about our company and why we are proud of it.





## **ENGINEERING ASSOCIATIONS & MEMBERSHIPS**

ACECON being a Structural Consultant is actively involved with many associations working in the field of Structural Engineering.

ACECON is associated with the following organizations:

- a) The Institution of Engineers (India).
- b) Indian Association of Structural Engineers.
- c) Consulting Engineers Association.
- d) Empanelled as a Structural Engineer in MCD.



The top half of the page features a composite background image. It includes a large bridge spanning a body of water, overlaid with a network of blue and red lines and dots, suggesting a data or structural analysis. In the foreground, four business professionals (three men and one woman) are shown in a meeting, looking at a tablet. The word "MISSION" is prominently displayed in large, white, bold, sans-serif capital letters across the middle of this section.

# MISSION

We at ACECON believe every structure to be different and treat them accordingly. The idea is to arrive at such a system, which gives most safe and economical system maintaining the concept of the Architect. We believe that Structural Engineering is not just following the codes of practices but applying fundamental laws of nature while analyzing. We undertake original and proof consultancy, design practices conforming to standards and specified codes, adopt latest techniques and software's for analysis and design. Last but not the least Time Is the Essence of Our Work'.

Structural Engineering is an area of primary interest and covers analysis and design of various types of structures. Based on Geotechnical investigation report from the site, various alternatives of foundation system are considered along with their feasibility studies and economy. Preliminary cost studies are carried out for various feasible options comparing them all on one scale. This helps in choosing the most viable alternative for the project. Sometimes amalgamation of different alternatives has to be done in order to eliminate the drawbacks in the finally adopted alternative. The whole process indicates the highly interactive design approach adopted by us.

During this entire exercise of catering to the standard codes of practices, fundamentals of engineering science and seeking the optimal solution, client's requirements are kept. But stability of structure and economy is our main aim.





# VISION

To be a competitive company and a reference in Consultancy Services with dynamism and creativity. The company strives to establish itself as the preferred service provider for the provision of consulting services in engineering services.



# PRINCIPLES

The actions of ACECON are founded on the respect for the environment, society and the human being. To guarantee such conduct, the group bases its line of action on four fundamental principles:

## **Ethics | Transparency | Equity | Sustainability**

- Times Lapses, Trends Changes, Generations Pass, But Wisdom Endures.
- The Wisdom Is To Live By Benefit From and Take On The Challenges Ahead.
- ACECON As Part of Its Quest For Knowledge Has Drawn On Its Wisdom.
- Taken From The Scriptures Are Six Basic Tenets.
- Vision, Enterprise, Teamwork, Values, Action and Results.
- Principles, That Form Our Personal And Corporate Attributes.
- Lets these Tenets Guide Us into the New Era.
- ACECON as part of its quest is committed to provide Structural Design & Project Management Services of finest quality for maximum customer satisfaction.





# Our Q.H.S.E. Policy

At ACECON ENGINEERS, Quality, Health, Safety & Environmental concerns are fundamental to its business of consulting services in engineering.

In pursuit of the above ACECON ENGINEERS is committed to:

- Comply with all applicable legal and other requirements connected with Quality, Occupational Health, Safety & Environmental matters.
- Conserve & optimally use natural and other resources by adopting relevant technology and implement measures to maintain Safe working and Occupational Health standards and provide framework leading to customer satisfaction.
- Continual Improvement in Quality, Occupational Health, Safety and Environmental performance. Prevent pollution through planned objectives and targets.

Continuous prevention of pollution, injuries, and ill health through planned objectives and targets.



## COMPANY OBJECTIVE

The long-term objective of the company is to grow into a well-managed, resourceful Consulting Engineering entity, offering all services within the built environment. Thus, our objective is to thoroughly satisfy our clients' requirements in terms of meeting the constraints of quality, time and budget. We thus endeavour to constantly and consistently communicate with our clients to ensure that their requirements are being met. We do not believe in "one solution fits all". We provide services to meet our clients' specific and unique needs.

ACECON is committed to the principles and practices of quality assurance. A thorough checking procedure is in place throughout every project.





## **OUR LEADERS**

ACECON is a team of enthusiastic, energetic, and imaginative people with a diverse spectrum of experience, ranging from single-family residents to high-rise towers to complicated steel structures. Our greatest strength of teamwork comes from a shared philosophy of excellence.

### **SYED MOHAMMAD ADNAN**

Principal Consultant  
M.Tech (Structures), M.B.U  
B.Tech (Civil), A.M.U  
Chartered Engineer (Civil): The Institution Of Engineers (India)  
Member: Indian Association of Structural Engineers  
Member: Consulting Engineers Association  
Empanelled Structural Engineer: MCD

### **MOHD. NADEEM**

M.Tech (Structures)  
M.I.E., Chartered Engineer  
Member: Indian Association  
of Structural Engineers

### **ZAMEER HAIDER**

Associate  
B.Tech (Civil), A.M.U

### **J. M. JOSHI**

Associate  
B.Tech (I.I.T, Bombay)  
Ex Chief Engineer-DDA

### **ANUBHAV SHARMA**

Design Manager, Civil/Structural  
M.Tech (Structural & Foundation)  
B.Tech (Civil)



## **OUR CLIENTELE**

- Acecon works for the following companies/ organizations and our list is still growing :-

### **A) DEVELOPERS & BUILDERS**

- Ansal API Ltd.
- Ansal Buildwell Ltd.
- Ansal Landmark Township Pvt. Ltd
- Ambuja Realty
- Airports Authority Of India
- BPTP Ltd.
- Delhi Development Authority
- Dynamic IT Parks Pvt Ltd.
- Earthcon Constructions Pvt. Ltd.
- Frigerio Conserva Allana Ltd.
- Focus Energy Ltd.
- Hilton Worldwide Ltd.
- HSCC Ltd.
- Jagdamba Hospitality Pvt. Ltd.
- Jaiprakash Associates Ltd.
- JPL Developers
- Kailash Nath Associates Pvt.Ltd.



- Lanco Infratech Ltd.
- Mitsubishi Motors
- Nivan Habitats Pvt Ltd.
- Niho Constructions Ltd.
- Pardos Realty Pvt Ltd.
- Rajhans Infratech Pvt Ltd.
- Spaze Towers Pvt. Ltd.
- Samiah International Builders Pvt. Ltd.
- Stellar Ventures Pvt. Ltd.
- Saving Catalyst
- SPML Infra Ltd.
- Shapoorji Pallonji & Co. Ltd.
- Trehan Builders
- Tricone Projects India Ltd.
- Unitech Ltd



## **B) ARCHITECTS**

- A.E.Studio
- Arch Studio Pink Iris Pvt. Ltd.
- Ashok Tandon & Associates Pvt. Ltd.
- Ashwin Alva Associates
- Archage Infratech Pvt. Ltd.
- Arihant Conception
- Ashish Kapoor & Associates
- Architecture Plus
- ARG Technocrats
- Blue Leaves Design
- Common Ground Practice
- Collaborations Architects
- Design Bureau
- Horizon Design Studio Pvt. Ltd.
- ISBE Consulting Inc.
- Plural Design Consultants Pvt. Ltd.
- Rudraa Associates

- Sandeep Geeta & Associates
- Sikka Associates
- Somaya & Kakar Architects
- Space Design Group
- Sukriti Group
- Srishti Designers
- Srishti Consulting Service
- Studio Symbiosis Architects
- The Design Centre
- Tybros Infratech Pvt. Ltd.
- Urbane-The Design Workshop
- White Studio Architects



#### **C) CONSULTANTS**

- Feedback Ventures Pvt. Ltd.
- PwC
- KPMG
- PwC - PricewaterhouseCoopers Private Limited
- Rites Ltd.
- Park Projects Consultancy Pvt. Ltd.
- Synergy Property Development Services Pvt Ltd

#### **D) INDUSTRIES**

- Grasim Bhiwani Textiles Ltd.
- Everest Industries Ltd.
- Altech Metals Pvt. Ltd.
- Fedders Lloyd Corporation Ltd.
- Haryana Leather Chemical Ltd.
- Misumi India Pvt. Ltd.
- Multi Colors Steel Pvt. Ltd.
- New Delhi Lab
- Rockland Hospital
- Surya Shakti Energy Resources Pvt. Ltd.
- Shimizu India



# **OUR SERVICES**

ACECON offers a broad range of Structural & Civil Engineering services. Since our inception, we have developed and fine-tuned a highly automated, but creatively charged environment that allows us to continually improve our design processes while providing exceptional results.

ACECON has designed projects to respond to diverse site conditions ranging from black cotton soil in Gujrat to rocky strata in Vishnuprayag, Uttarakhand and high seismic zones of IV & V category in North India. In fact, many of our buildings stood directly along the fault planes.

## ***We provide the following Services:***

- Value Engineering in Structural Design done by another Consultant.
- Structural Design Services For Multistoried Buildings.
- Structural Design Services For Villas etc.
- Structural Design Services For Commercial establishments.
- Structural Design Services For Hotels/Hospitality services.
- Structural Design Services For Educational Institutions.
- Structural Design Services For Hospitals.
- Structural Design Services For Aviation Industry.
- Structural Design Services For Industrial Structures.
- Structural Design Services For Underground Structures.
- Structural Design Services For Microwave Towers.
- Structural Design Services For Trusses/Space Frames.
- Structural Stability Checking & Retrofitting Solutions.
- Vertical/ Horizontal Extensions To Existing Buildings.
- Proof Checking Of Structures.
- Preparation Of Tender, Estimation, B.O.Q, B.O.M.
- Construction Management.





## **OUR PROJECTS**

- 1) Group Housing having High-rise Towers (3B+42/45) Storey with height more than 150M for 'Nivan Habitats Pvt.Ltd.' in Hyderabad in Aluminium Formwork construction. Total built-up area is approx 40 Lac Sqft.
- 2) Hospital Facility Campus NCI-AIIMS at Jhajjar, Haryana having approx. built-up area 19.0 Lac Sqft for Shapoorji Pallonji & Co. Ltd. and HSCC Ltd.
- 3) Headquarter Office building for Information Directorate (ID) for U.P Government in Lucknow as (B+G+6) storey. Architect: Studio Symbiosis, Noida.
- 4) Five Star Hotel "Double Tree by Hilton" in Ahmedabad.
- 5) Five Start Hotel Extension by Two additional storey in MS Frame Structure with Metal Deck system over Fourth Floor in Calangute, Goa.
- 6) Group Housing having five Towers (B+14) Storey for 'Pardos Realty Pvt.Ltd.' in Lucknow in Aluminium Formwork construction. Total built-up area is approx 10 Lac Sqft.
- 7) Group Housing having Eight Towers (2B+22) Storey for 'Rajhans Infratech Pvt. Ltd.' in Greater Noida in Aluminium Formwork construction. Total built-up area is approx. 11 Lac Sqft.
- 8) Group Housing having (2B+G+26) Storey for 'Earthcon Constructions Pvt. Ltd.' in Greater Noida, U.P.
- 9) Group Housing having (2B+G+18) Storey for 'Unitech Ltd' in Gurgaon, Haryana.
- 10) Small Bridge over a canal in Rudrapur for Samiah International Builders with a span of approx. 20 M.





- 11) Medium Size Bridge over a river in Bihar for a contractor with a length of approx. 380 M for tender purpose.
- 12) Five Star Hotel building (4B+G+13) at Kathmandu, Nepal for Hilton.
- 13) Office building (B+G+4) storey for Punjab Kesri at Noida.
- 14) Hospital building (3B+S+9) storey with 2.75 Lac Sqft built-up area at Faridabad for Batra Hospitals.
- 15) Structural Stability Audit of Headquarter building of 'Press Trust of India' (PTI) at Sansad Marg, New Delhi.
- 16) Structural Stability Audit for 30 factory complexes in Pakistan for PwC.
- 17) Structural Stability Audit for 12 factory complexes in India for PwC.
- 18) Structural Stability Audit for 40 factory complexes in Bangladesh for KPMG.
- 19) Group Housing (16 Acres) at Amritsar for Ansal Buildwell Ltd.
- 20) Four towers of (2B+S+14) for Bellevue Blossoms at Scottish Gardens, Indrapuram, Ghaziabad.
- 21) Office building for Petronet LNG Ltd. at Kochi, Kerala with foundations resting on 50 M deep piles.
- 22) Socio-Cultural Centre at Dehradun for O.N.G.C Ltd.
- 23) Marvel (B+S+16 storey) at Ghaziabad for 'Niho Constructions Ltd'.
- 24) Steel Plant Structure (50 M Height) for Haryana Leather Chemical Ltd. at Jind.



## OUR PROJECTS

- 25) Structural changes and retrofitting for some portion at World Bank building at Lodhi road, New Delhi.
- 26) Varanasi Airport (with KKAAPL) for 'Airports Authority Of India'.  
Space Frame at Varanasi Airport of span 45M x 120M for 'A.A.I'
- 27) Jabalpur Station Building for 'Rites Ltd'.
- 28) SAA Vocational Centre at Greater Noida for 'Stellar Ventures Ltd'.
- 29) School Buildings at Vishnuprayag, U.A. for 'Jaiprakash Associates Ltd'.
- 30) Office Building at Sidhi, M.P. for 'Jaiprakash Associates Ltd'.
- 31) Technical Audit for Library Building at D.U. for 'Rites Ltd'.
- 32) Villas at Haridwar for JPL Developers.
- 33) Residential Buildings at Sushant Lok, Gurgaon for 'Ansal Buildwell Ltd'.
- 34) Residential Buildings, LSC's at Meerut, Agra, Lucknow for 'Ansal API'.
- 35) Extension of 3-storey IT Building to 6-storey at Manesar for 'Trehan Builders'.
- 36) Marriott Hotel, five star (with KKAAPL) at Gurgaon for 'Unitech Ltd'.
- 37) Numerous Buildings upto 23 storey for different developers.
- 38) Technical Proof Checking for IT SEZ at Hyderabad for 'Indu Tech Zone Pvt. Ltd'.



# OUR PROJECTS

- 39) Complicated Truss of span 25M x 115M at Siliguri, W.B. for 'Ambuja Realty.'
- 40) Solar Panel supporting structures on roof top at Megasoft building in Udyog Vihar, Gurgaon for Suryashakti Energy Resources Pvt. Ltd. The total capacity was 60 KW.
- 41) Solar Panel supporting structures on roof top at Gupta Overseas factory in Agra, Uttar Pradesh for Suryashakti Energy Resources Pvt. Ltd. The total capacity was 100 KW.
- 42) Structural Stability Audit for a factory building at plot no. 241, Udyog Vihar Phase-1, Gurgaon, Haryana for MISUMI India Pvt. Ltd.
- 43) Structural Stability Audit for a factory building at plot no. 26, Sector-34, Gurgaon, Haryana for MISUMI India Pvt. Ltd.
- 44) Structural Stability Audit for two office buildings at plot no. A-200 & 201, Sector-63, Noida, for Oberthur Technologies India Pvt. Ltd.
- 45) Structural Stability Audit and Retrofitting details for residential complex upto four storey for BSES at Janakpuri, New Delhi.



# HOSPITALS



National Cancer Institute (NCI) , AIIMS Jhajjar



# HOSPITALS



NCI AIMMS, Jhajjar



# HOSPITALS



150 Bedded Super Specialty Hospital, Patna (Bihar)



# HOSPITALS



80 Bedded Super Speciality Hospital, Srinagar (J&K)



50 Bedded Multi Speciality Hospital, Adoni, Kurnool, AP.



# HOSPITALS



40 Bedded Multi Speciality Hospital, Freetown, Sierra Leone.



Saham Oman Ayurvedic Health Resort



# HOSPITALS



30 Bed Orthopedic Hospital, Bulandshahr (UP)



# HOSPITALS

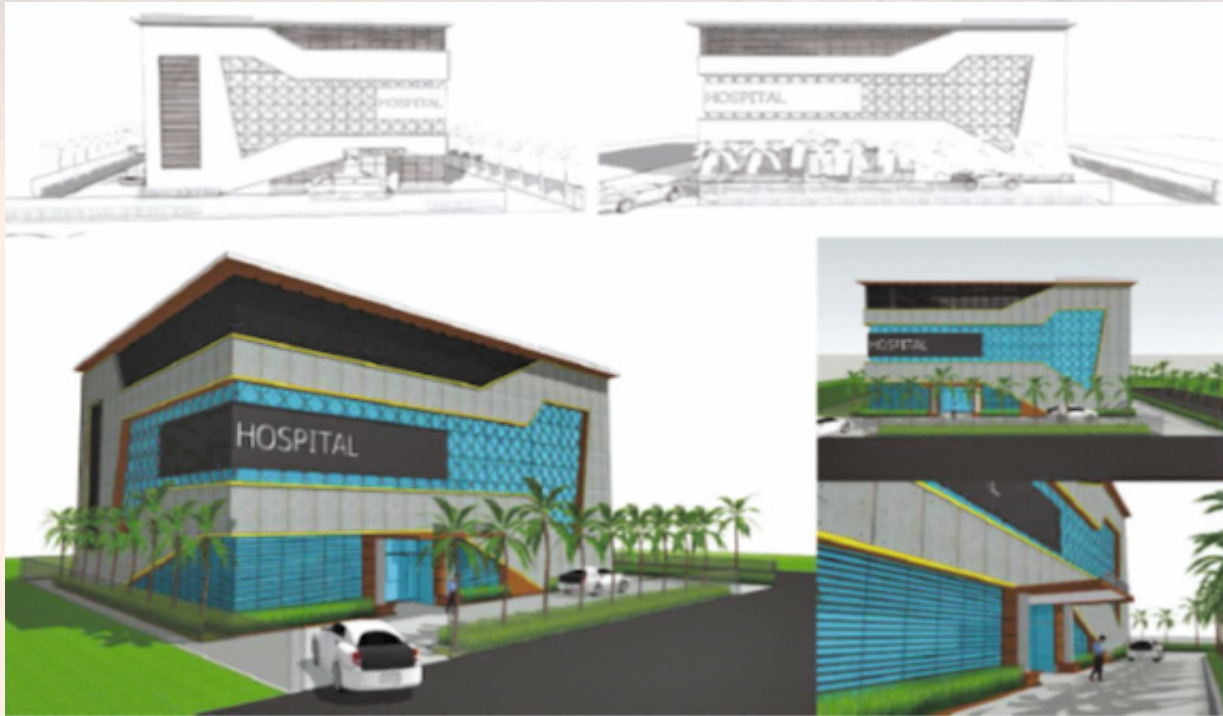


40 Bedded Specialty Hospital, Patna (Bihar)



55 Bedded Multi Specialty Hospital, Karnataka.

# HOSPITALS



20 Bed Ortho-Gynae Hospital, Khanna (Punjab)



30 Bed Mother & Child Hospital, Yamunanagar (HR)



# HOSPITALS



20 Bedded Urology & Surgical Hospital, Una (HP)



# HOTELS



Double Tree By Hilton, Ahmedabad



# HOTELS



Double Tree By Hilton, Ahmedabad



# HOTELS



Double Tree By Hilton, Kathmandu



# HOTELS



Marriot Hotel, Gurgaon



# RESORT & SPA



100 Keys Five Star Resort & Spa, Nepal



# COMMERCIAL BUILDING



Punjab Kesari Head Office, Noida



# COMMERCIAL BUILDING



Beta Plaza, Noida



# COMMERCIAL BUILDING



LSE Sector - 3 Meerut



Office Building, Noida



# COMMERCIAL BUILDING



India Expo Plaza, Greater Noida



# COMMERCIAL BUILDING



Office Building, Naraina, Delhi



# COMMERCIAL BUILDING



Banquet Hall, Meerut



# COMMERCIAL BUILDING



Office Building, Hyderabad



# RESIDENCIAL TOWER



Aero Heights, Ghaziabad



# RESIDENCIAL TOWER



Enclave, Kota (Rajasthan)



# RESIDENCIAL TOWER



New Koyal Enclave, Ghaziabad



# RESIDENCIAL TOWER



Aspen Heights, Bhiwadi





# RESIDENCIAL TOWER



Oxirich Avenue, Ghaziabad



# RESIDENCIAL TOWER



Oxirich Sanskriti-II, Bhiwadi



# RESIDENCIAL TOWER

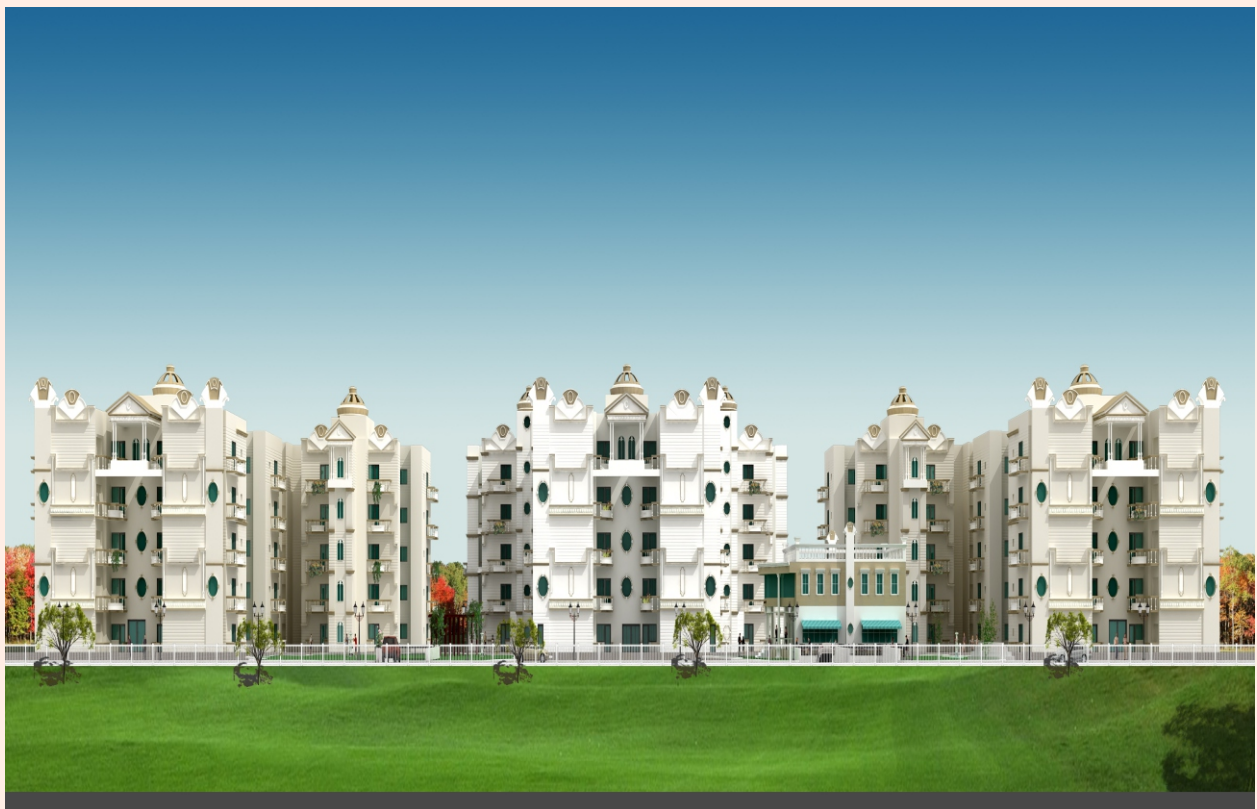


Oxirich Square, Ghaziabad





# RESIDENCIAL BUILDING



Samiah Residency, Lucknow



# RESIDENCIAL BUILDING



Amroha Greens, Amroha



# RESIDENCIAL BUILDING



Residence, Ghaziabad





# AIRPORT



Varanasi Airport



# VILLA



Amar Villa, Udaipur





# VILLA



Villa, Agra



# VILLA



Villa, Dasna





# SCHOOL



Sanskar World School, Ghaziabad



# SCHOOL



The Maalinyai School, Patna



# SCHOOL



Buddha International School, Gurgaon



# TEMPLE



Laxman Temple, Laxmangarh



# MASJID



Hamidi Masjid, Bareilly



